



**ADVANCE**  
CONSTRUCTIONS

**COMMITTED  
TO EXCELLENCE**



# PRESIDENT'S MESSAGE

---

Advance Constructions Company dedicated to provide the best possible construction services in the market. Our team of experienced professionals has been working in the construction industry for many years and we are passionate about what we do. We believe that by providing top quality construction services is the key to a successful project, and so we strive hard to give our clients the best possible results.

At Advance Construction, we are committed to provide the highest standards of customer service and we take pride in every project we complete. We understand that each project is unique and we work closely with our clients to ensure that they get the best results. We understand that construction projects can be complicated and we are always eager to help our clients navigate the process. Our team is always on hand to answer any question and to provide guidance throughout the entire process.

*Rafaqat Hussain Awan*

## TABLE OF CONTENT

---

04	About us
06	Why choose us?
08	Meet our experts
10	Constructions Machinery
14	Our projects
22	Up coming projects
24	Contact us



# ABOUT US

Advance Constructions is a multi-disciplinary civil engineering construction company, with proven capabilities over a wide range of different technical fields in the Civil Engineering Industry since 2020. Advance Constructions provides construction services including concrete ready mix solutions to the real estate developments & constructions sectors of Pakistan.

Advance Constructions is one of the Pakistan's upcoming new construction companies with invaluable experience and expertise in construction and development of civil, steel fabrication and land development works. We carry out all aspects of construction and development projects, from planning to finish.



We recognize the benefits of working as a team – with our clients, partners and supply chain – and we have a vast experience of this approach. In this way we enable our clients to fully benefit from our broad practical experience and the collective knowledge of the professionals and experts in the team.

Advance Constructions with the flexibility of a small firm and the resources and expertise of a large firm, we compete with companies large and small to provide a variety of nimble and innovative solutions for our customers.



## 01 PROCESS DESIGN & ENGINEERING

We design and engineer plants to fit your material type and requirements and maximize the efficiency, safety, and ease-of-use of your facilities

## 02 SAMPLE TESTING & PROCESS FLOW VALIDATION

This step in the process gives you confidence and validation in your investment before anything is implemented in your full-scale facility.

## 03 CONSTRUCTION & FABRICATION

We collaborate closely with our team and our process engineers to seamlessly execute the construction of your processing or conditioning facility and other project needs.

## 04 EQUIPMENT SECTION, INSTALLATION

We supports your equipment selection process by making expert recommendation based on your material type and facility needs.

## OUR MISSION

Advance Constructions, our mission is to create a future where construction is efficient, reliable and sustainable - a future where every structure is not just built, but also built with a lasting impact.

## OUR VISION

To create innovative and quality construction projects that improve lives and enhance the environment, with a focus on meeting the needs of our customers and delivering excellent construction services.

## OUR VALUES

Advance Constructions believe in maintaining the highest standard of quality, integrity, creativity, positive attitude & professionalism, that meets and surpass expectations while offering prompt and lasting constructions services.

1,800,000 SQ.FT.

CONSTRUCTED PROJECTS

20+

TOTAL PROJECTS

1,300,000 SQ.FT.

ON GOING PROJECTS

# WHY CHOOSE US?

Advance Constructions approach each project not simply as a construction service vendor, but rather a valued partner and always consider the best possible value addition to the project on site.



**INTEGRITY**  
We believe in maintaining the highest standard of professionalism & integrity for lasting relations.



**INNOVATION**  
We strive to find the best solutions and dare to do things differently and safely that delight our customers by providing **efficient, innovative and reliable** engineering solutions.



**EXCELLENCE**  
We seek and are committed to achieve outstanding performances and exceptional outcomes to bring continuous improvement through quality management.



**PASSION**  
Advance Constructions is passionate towards their line of work and eager to take the lead and lead by example & to capture maximum market share by maintaining cost leadership & services.

## ADVANTAGES

Our competitive advantage rests upon;

- Experience
- Flexibility
- Safety First
- Trust
- Innovation
- Positive attitude
- Progress
- Cost Cutting
- Relationship Building
- Out of the scope services

# 20+

Years of Experience



## WE HAVE A QUALIFIED TEAM OF BUILDERS AND EXPERIENCED ARCHITECTS

Advance Constructions has an extensive team of industry experts from engineers and builders to product managers, and more. Our team is continuously researching, testing, and adopting advanced technology solutions to pass on to our customers.

### TEAM SKILL

Acceleration



Decision



Timing



## WE PROVIDE ONLY PROFESSIONAL SERVICES

Advance Constructions has vast experience of construction and land developments We have developed 1.2 million Sq. Ft. of construction as per today and will be delivering additional 500,000 Sq. Ft. by the end of next year.



# RESIDENTIAL



# BRIDGES & CULVERTS



# COMMERCIAL

# OUR SERVICES

- Preconstruction & Design
- Feasibility & Due Diligence
- Conceptual, Pro Forma & Construction Cost Estimating
- Architectural Design
- Project Planning & Scheduling
- Value Engineering

# CONSTRUCTION

- Design-Build
- Design-Assist
- General Contractor
- Construction Management
- Project Management
- Owner's Representation



**RAFAQAT HUSSAIN AWAN**

PRESIDENT

17+ years of experience in real estate and construction business with leading real estate company in Asia.



**FAISAL HUSSAIN**

CEO

20+ years of experience in construction industry with developments of societies and high-rise projects national and international both.

# MEET OUR EXPERTS

# SERVICES SECTORS

- Government
- Private
- Commercial
- Residential
- Individual Clients



# OPERATIONAL OVERVIEW

Our company is characterized by able leadership, a skilled workforce, excellent labor relations, a strong safety record and good customer relationships. We are working hard to capitalize on our proven capabilities and safety record.

On a corporate level, we are taking an increasing role in supporting the business development efforts of our client partners. This co-operative business development initiative will perform several vital functions



**JAFFAR HUSSAIN AWAN**

Managing Director

A Young Energetic professional, done Masters of Business Administration and running multiple constructions and real estate projects.



**WAQAR AHMED AWAN**

Managing Director ACS

He has inception and influential in the success of the company, with his experience in past years setting examples in the Constructions & Ready mix industries.



**SAIFAL RAZA**

Managing Director ACS

With his diverse experience in the industry & in the depth understanding of the corporate operations, Advance Concrete achieved its long term growth objective.



# OUR CAPACITY

Our company's main asset is our people, this is why we focus on attracting outstanding talent, and trained & challenging people to help them fully develop all the abilities. Our Success over the years is due to our employees' dedication to excellent work & customer services that exceeds expectations.

# ADVANCE CONSTRUCTIONS MACHINERY

## TOWER CRANE

Advance Constructions equipped with Two tower cranes weight capacity of 6 Ton each and boom up to 250 feet each crane. Currently installed at Ramada River Court Yard Site and Zarkoon Tower GT Road Islamabad.



## EXCAVATOR



## CONCRETE PUMP 48 METERS



## THREE READY MIX BATCHING PLANTS

Our Ready Mix plants at site, with capacity of 2 cubic meter, works simultaneously



## TRANSIT MIXER

We are always ready with 20 Transit Mixers to deliver the Maximum limit of concrete at any site. The operations must be in control and smooth.



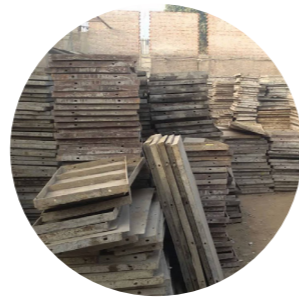
# PLANTS AND MACHINERY



**TRACTOR WATER BOWSER**



**SANITARY PUMP**



**SHUTTERING**  
(200,000 sq.ft)



**CONCRETE PLANT**  
(03 SHOTS)



**SITECONTAINER**  
(03 SHOTS)



**JUMPER COMPACTION**  
( QUANTITY: 10)



**TOWER CRANE**  
( 6 TON )



**TOWER CRANE**  
( 8 TON )



**SCAFFOLD PLOTS**  
(200,000 sq.ft)



**LOADER**



**TOTAL STATION**



**AUTO LEVEL**



**DUMPER**  
( QUANTITY: 5)



**TRACTOR TRALLY**  
( QUANTITY: 2)



**PICKUP**  
( QUANTITY: 4)



**MOBILE CRANE**



**MOBILE CRANE**



**EXEVATOR**

## OUR PROJECTS

We also pride ourselves of vast experience in the building industry where we have constructed both high-rise and low-rise residential buildings, commercial buildings, bridges, culverts individual projects and also institutional buildings.



### ZARKOON HEIGHTS

Located at G 15/4 GT ROAD ISLAMABAD. A magnificent building of Ground + 9 floors has completed its grey structure and will be delivered in 2023.

Client: Kohistan Builders & Developers  
 Area: 525,000 SQ. FT.  
 Date: April 2021

### KBD TOWER

KBD Tower is located at one of the top societies on Motorway Islamabad; Eighteen Housing Society. Its has Basement + Ground + 10 floors.

Client: Kohistan Builders & Developers  
 Area: 200,000 SQ. FT.  
 Date: December 2021







### ROMAN GROVE

This unique building stands out with its grandeur and beauty, featuring a ground plus three floors of exquisite design.

Client: Premier Choice  
Area: 85,000 SQ. FT.  
Date: September 2021



### ROMAN GROVE II

A roman inspired architectural building designed specially for hospitals, banks and clinics. A fully commercial unit located at DHA phase 1 Sector -F, Islamabad.

Client: Premier Choice  
Area: 30,000 SQ. FT.  
Date: September 2021

### SPRING ARCH

Spring Arch, a stunning basement, G +7 floor building that is sure to take your breath away. With its unique architecture, made from only the highest quality materials.

Client: Premier Choice  
Area: 90,000 SQ. FT.  
Date: March 2022



## RIVER COURTYARD BY RAMADA

Introducing the ultimate masterpiece of architecture!  
This stunning structure stands 16 floors tall, combining traditional styles with modern flair.

Client: Premier Choice  
Area: 450,000 SQ. FT.  
Date: April 2022



## RESIDENTIAL PROJECTS

### VILLA 350-B

With its spacious living and dining areas, cozy bedrooms, and modern amenities, you can experience the best of modern living. This magnificent villa offers plenty of room to relax and enjoy.

Area: 15,000 SQ. FT.  
Location: DHA SECTOR-F ISLAMABAD



### VILLA 193

Its spacious interior provides plenty of room for entertaining, while its luxurious furnishings and ornate decorations add a touch of sophistication. The villa also features a large patio area and a private pool, perfect for hosting friends and family.

Area: 15,000 SQ. FT.  
Location: DHA SECTOR-F ISLAMABAD

### VILLAH 115

This stunning villa offers 15,000 Sq.Ft of luxurious living space, perfect for unwinding in style, with modern interiors, spacious bedrooms, and endless possibilities for entertaining or simply relaxing.

Area: 15,000 SQ. FT.  
Location: BAHRIA TOWN PHASE-8 ISLAMABAD

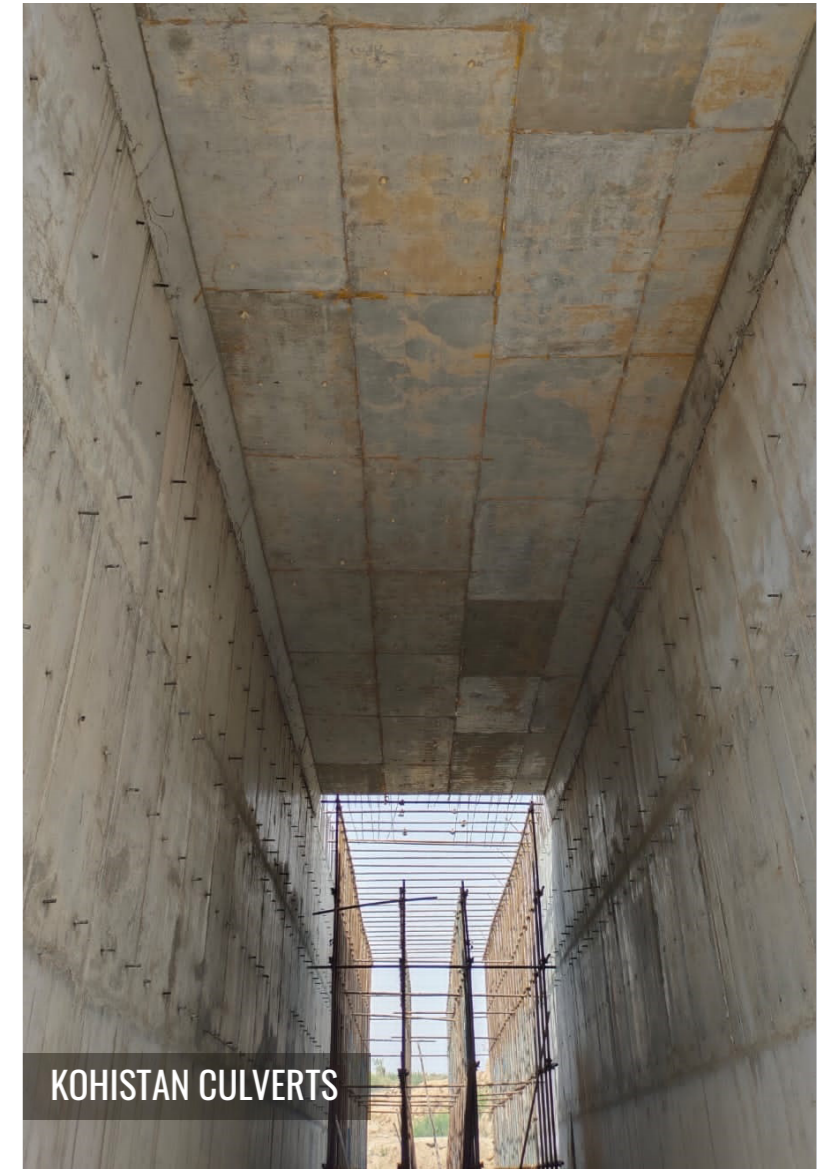


### KOHISTAN ENCLAVE DEVELOPMENTS

The goal of Advance Constructions is to revolutionize the construction industry for the betterment of society. We are committed to having a positive impact on the environment by focusing on sustainability and creating buildings with efficient resource usage. We strive to work closely with our clients to identify their needs, develop innovative constructions engineering, and deliver projects that are both aesthetically pleasing and safe. We believe in creating products and projects that are both efficient and of lasting value for generations to come.



KOHISTAN BRIDGE



KOHISTAN CULVERTS



BUSINESS LOUNGE



ENTRANCE GATE 1

# UP COMMING PROJECTS

Advance Constructions is dedicated to the success of upcoming projects. We have highly experienced personnel who take the time to listen and understand the needs of our clients. Our staff is focused on delivering exceptional results through well-defined timelines and resources.

We ensure that each project is well-coordinated, efficient and cost-effective. Our goal is to exceed expectations in order to create long-term partnerships with our clients. We are committed to excellence in every phase of our work and look forward to advancing construction on upcoming projects.



## RIVER HILLS 5

Introducing the RIVER HILLS 5, a magnificent 12-floors residential building that stands proud in the heart of DHA- Phase-1 Islamabad.

Client: Premier Choice  
 Area: 300,000 SQ.FT  
 Date: January 2023

## RIVER COURTYARD - TOWER II

This unique building stands out with its grandeur and beauty, featuring a ground plus 15 floors of exquisite design.

Client: Premier Choice  
 Area: 400,000 SQ. FT.  
 Date: October 2023



## RIVER HILLS 6

This multi-level structure stands tall at a height of 12 stories, & pent houses giving you a spectacular view of the surrounding area.

Client: Premier Choice  
 Area: 300,000 SQ.FT  
 Date: December 2023

# OUR OFFICE



**NAREEMA**  
DEVELOPMENTS



# CONTACT US

## HEAD OFFICE:

Unit-8, 3<sup>rd</sup> Flood, Box Park, Spring North, Phase-7, Bahria  
Town Islamabad, Pakistan. 051 8485861

## ACS SITE OFFICE:

RC Chowk Humak, Model Town, Islamabad, Pakistan 051 8773021  
[info@nareemadevelopments.com](mailto:info@nareemadevelopments.com) | [www.nareemadevelopments.com](http://www.nareemadevelopments.com)

